

GENERAL ACCOMMODATION

The list here shows some of the options we are currently aware of. Be warned that some hotels charge a supplement if a pet is in the room and some might not allow pets. You may want to find this out before booking. There are a lot of B&B's in North Berwick. High season here is Easter, June to September and Xmas to New Year.

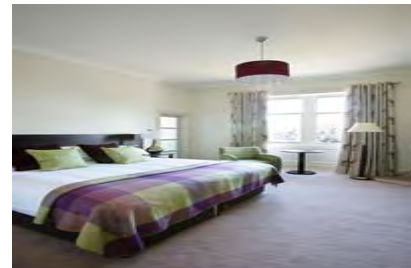
Some clients have used AirBnB (<https://www.airbnb.co.uk/s/North-Berwick--United-Kingdom>) to locate alternative accommodation. This can often be much cheaper but ensure pets are allowed when booking. Any accommodation away from the beach tends to be much cheaper.

Nether Abbey Hotel

20 Dirleton Avenue
North Berwick
East Lothian
EH39 4BQ

Tel: 01620 892802

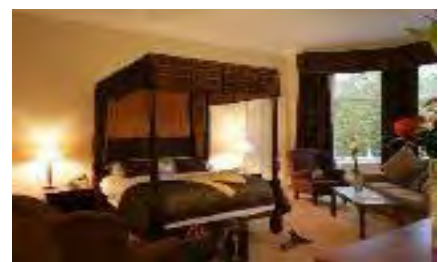
Family run hotel which has recently renovated rooms to a good standard 5 minutes' walk from DentalVets.



Web: www.netherabbey.co.uk/accommodation.htm

Macdonald Marine Hotel

Cromwell Road
North Berwick
East Lothian
EH39 4LZ
Tel: 0870 4008129

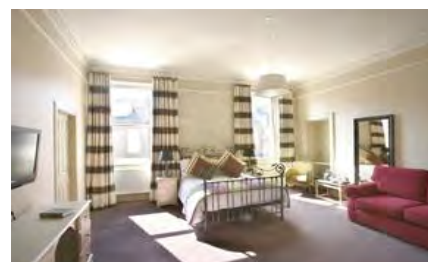
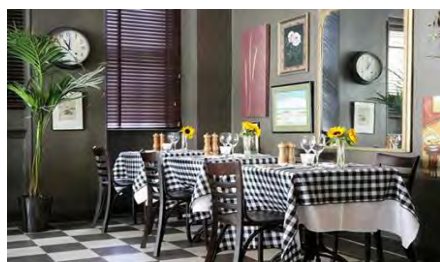


Web: www.macdonaldhotels.co.uk

No.12 Quality Street

12 Quality Street
North Berwick
East Lothian
EH39 4HP
Tel: 01620 892529

Situated close to the High Street and 10 minutes walk from DentalVets.



Web: <http://www.no12qualitystreet.co.uk/northberwick.html>

No.12 offer DentalVets clients a discount if you mention us at the time of booking. Recently the room charge was increased and can be around £140 per night for a twin.

The Open Arms

Main Street
Dirleton
East Lothian
EH39 5EG
Tel: 01620 850241

Family run hotel situated in a quiet picturesque village located 2 miles From North Berwick.



Web: www.golfscotland.com/accommodation/open-arms.asp

Tantallon Caravan Park

Tantallon Road
North Berwick
East Lothian
EH39 5NJ
Tel: 01620 893348

Wigwams sleep up to 5 people, fully insulated with heating, colour television, refrigerator and microwave. Own linen necessary or can be hired. **May only book minimum 2 nights.**



Web: www.meadowhead.co.uk

Drem Farmhouse

Drem,
North Berwick
East Lothian
EH39 5AP

A very homely family run farmhouse B&B in a small hamlet 10 minutes' drive from North Berwick.



Tel: 01620 850563 Web: www.dremfarmhouse.co.uk

The Castle Inn, Dirleton

The Castle Inn is a 19th century coaching inn overlooking the village green in Dirleton around 3 miles from North Berwick. It is a traditional village pub and bistro with 5 en-suite bedrooms. **Pets are not permitted in the rooms.**

- See more at: <http://www.castleinndirleton.com/#sthash.cy11TRRG.dpuf>



Seaholme B&B North Berwick

Located on the seafront of North Berwick, Seaholme offers nice accommodation and competitive rates.

<http://www.seaholm.co.uk/index.html>

